



Dengue Connect (2.0) User Manual

Date: 10/11/2024

By: PUDocs

Table of Contents

1. Introduction
2. Getting Started
3. User Interface Overview
4. Features and Functionality
 - Feature 1
 - Feature 2
5. Tips & Best Practices
6. Troubleshooting
7. FAQs
8. Support Information
9. Glossary

Introduction

Dengue Connect is a dynamic digital platform designed to foster community-driven dengue prevention practices through innovative social networking. This mobile app is a cornerstone of the Dengue Reduction through Education, Awareness, and Monitoring in Schools 2024 (DREAMS'24) initiative, spearheaded by the Indian Council of Medical Research - Vector Control Research Centre (ICMR-VCRC). The initiative is implemented in collaboration with the Department of Health and Family Welfare and the Department of School Education, Government of Puducherry.

Our mission is to empower both students and teachers, transforming them into proactive agents in the fight against dengue. Dengue Connect serves as an interactive platform where participants can actively engage by recording their contributions to dengue prevention efforts. It offers easy-to-understand, crucial information on dengue fever, mosquito breeding habits, and practical control methods.

This app is more than just a learning tool—it's an action platform. Users can directly submit reports on potential mosquito breeding sites and other issues to the relevant health authorities, ensuring rapid responses and timely interventions. By connecting educational efforts with real-world actions, Dengue Connect brings together schools, communities, and public health departments to collaboratively combat dengue.

Join us in this vital mission to safeguard our communities by taking a stand against dengue, starting in schools and spreading through the broader community!

This version expands on the app's goals, highlights its practical utility, and reinforces the collaborative nature of the initiative.

Getting Started

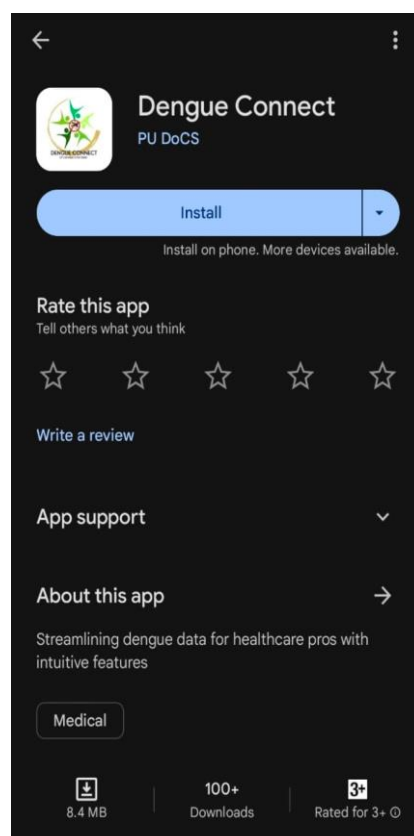
Welcome to Dengue Connect! This guide will walk you through the essential steps to start using the app effectively and make a positive impact in dengue prevention efforts.²

1.1 Installation Instructions

Getting started with Dengue Connect is quick and easy. Follow these steps to install the app on your mobile device:

- For Android:
 1. Open the Google Play Store on your Android device.
 2. Search for Dengue Connect in the search bar.
 3. Once you find the app, click on the Install button.
 4. The app will be automatically downloaded and installed on your device.
 5. After installation, tap the Open button to launch the app.
- Once the download is complete, tap **Open** to launch the app.

Note: Make sure your device meets the minimum system requirements: Android [version].

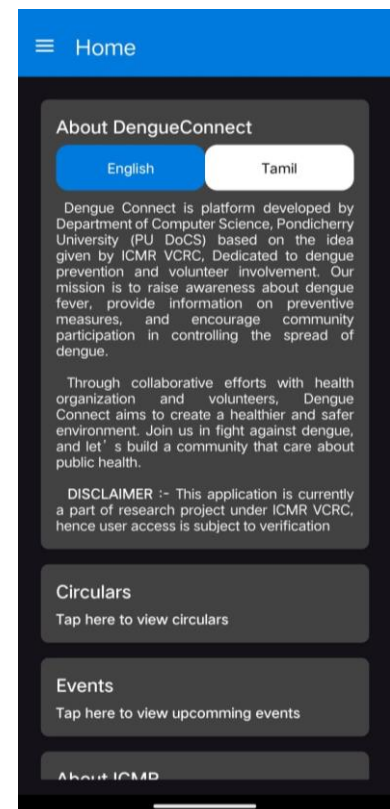
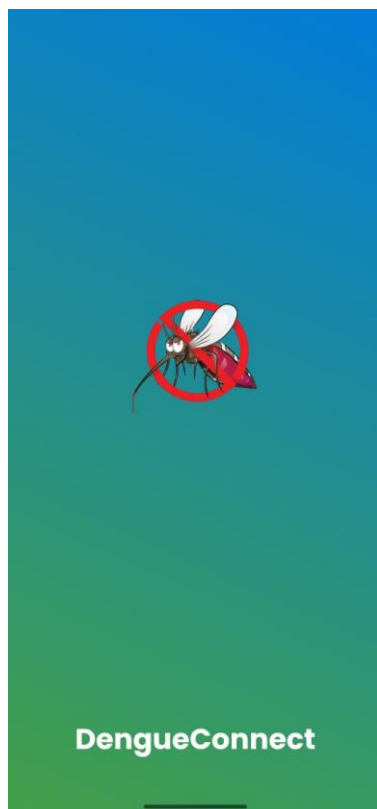


2.2 Guest Users

If you want to explore **Dengue Connect** without creating an account, you can do so as a **Guest User**. This feature allows you to navigate the app and access general features, although some actions (like reporting) will require registration.

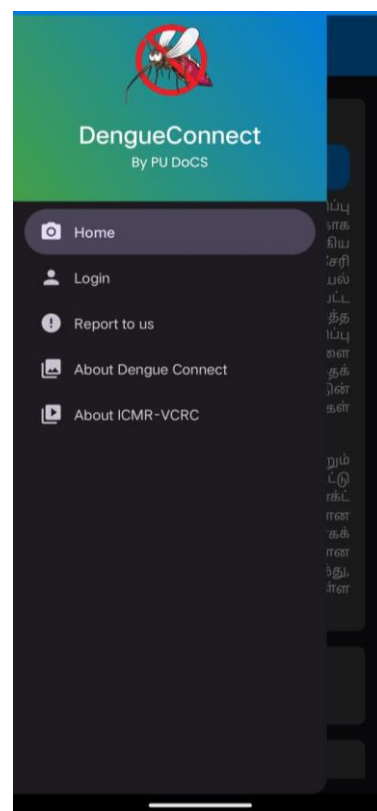
Here's how to access the app as a guest:

- 1) Open the app and **Continue as the Guest** button.

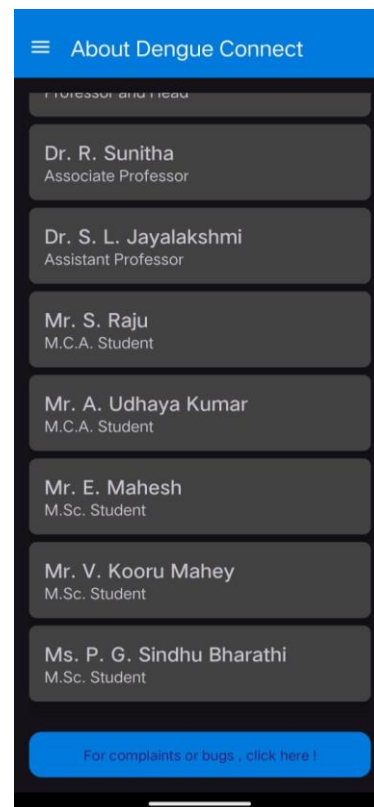
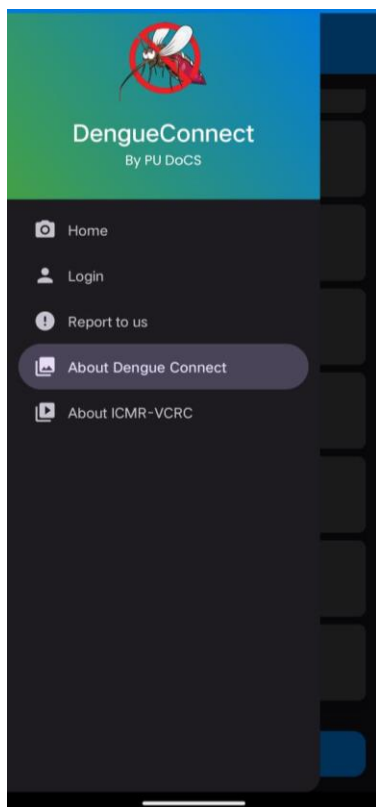


As a guest, you will have access to the following features:

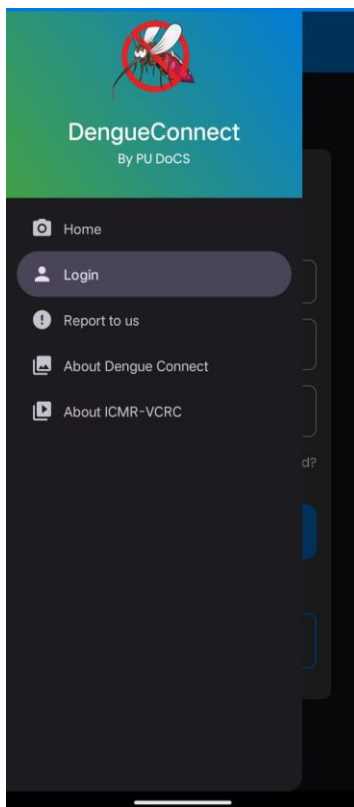
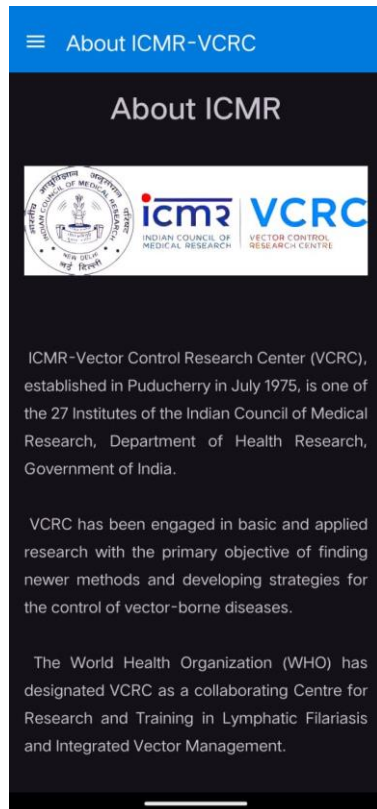
- **Home Page:** Learn about **Dengue Connect**, its mission, and how it contributes to the fight against dengue in English and Tamil.
- **Circulars and Events:** Stay up-to-date with important circulars and announcements regarding dengue prevention efforts, as well as upcoming events organised by ICMR-VCRC and other authorities.
- **About ICMR:** Read about the **Indian Council of Medical Research** and its initiatives in combating vector-borne diseases like dengue.



Tip: If you want to submit reports or log activities, you'll need to create a full account by signing up.



If you need to submit a complaint regarding the application or web, you can do so by clicking the button.



Next , For more information about ICMR-VCRC and their initiatives, you can visit their official website by clicking the **Visit ICMR-VCRC Website** button in the app.

You can switch to a full account at any time by clicking on the **Login** button in the app and following the registration steps.

2.3 Creating an Account

To fully utilise the features of **Dengue Connect**, such as submitting reports or recording activities, you'll need to create a user account. Here's how:

1. Open the app and click on the **Sign Up** button on the login screen.
2. Enter your **Full Name**, **Email Address**, **Mobile Number**, and create a **Password**.
3. Select your role: **Student**, **Teacher**, or **Authority**.
4. Choose your **School/Organization** from the dropdown list.
5. Agree to the **Terms and Conditions** by checking the box.
6. Click **Submit** to complete your registration.

Tip: Ensure your password is strong by using a combination of letters, numbers, and symbols.

After registration, you will receive a confirmation email. Click the link in the email to verify your account and activate it.

Student Registration Guide

The login screen features a blue header with a hamburger menu icon and the text 'Login'. Below the header, a grey box contains the text 'Welcome Back' and 'Sign in to access your account'. There are three input fields: 'Student', 'Email Address', and 'Password'. A 'Forgot Password?' link is located below the password field. At the bottom of the grey box, there is a blue 'Login' button, an 'OR' separator, and a blue 'Sign Up' button.

The sign up screen has a blue header with a back arrow and the text 'Sign Up'. The main heading is 'Get Started' with the subtitle 'by creating a free account as'. Below this, there are four blue buttons: 'Student', 'Teacher', 'Authority', and 'Submit'.

The student sign up screen has a blue header with a back arrow and the text 'Student Sign Up'. The main heading is 'Get Started'. It contains several input fields: 'Name', 'Select Gender', a field with the letter 'I', a dropdown menu showing 'A.J.HIGHER SECONDARY SCHOO ..', 'Email ID', 'Phone Number', 'Password', and 'Confirm Password'. Below these fields is a checkbox labeled 'I Agree to the terms and condition'. At the bottom, there is a blue 'Sign Up' button.

Filling in Student Details

When registering as a student, you need to fill in the following details accurately:

1. **Student Name:**
Enter your full name as per school records. This is important for identifying you correctly in the system.
 2. **Gender:**
Select your gender from the available options:
 - Male
 - Female
 - Other
 3. **Class:**
Select your current class from the dropdown list (e.g., I,II,III etc.). This will help categorise you appropriately within the school.
 4. **School Name:**
From the dropdown list of suggestions choose your school from the list to ensure you are linked to the correct institution.
 5. **Email Address:**
Enter a valid email address. This will be used to send you important notifications, including account verification details. Make sure it is an email that you have regular access to.
 6. **Phone Number:**
Provide your or a guardian's contact number. This will be used for further communication and recovery in case of account-related issues.
-

Setting Your Password

1. **Password:**
Create a strong password for your account. Make sure your password meets the following criteria:
 - Minimum of 8 characters.
 - Includes a mix of uppercase letters, lowercase letters, numbers, and symbols.
 2. **Confirm Password:**
Re-enter the password you created to confirm it. Both fields must match for the registration to proceed.
-

Accepting Terms and Conditions

Before you can complete your registration, you must agree to the terms and conditions of the Dengue Connect app:

1. Scroll down and locate the **Terms and Conditions** checkbox.
 2. Read through the terms by clicking on the **Terms and Conditions** link (optional, but recommended).
 3. Tick the checkbox labelled "I agree to the Terms and Conditions".
-

Once all these fields are filled in accurately, you can proceed by tapping the Sign Up button to submit your registration request.

Teacher Registration Guide

← Sign Up

Get Started
by creating a free account as

Student

Teacher

Authority

Submit

← Teacher SignUp

Get Started

Name

Select Gender

A.J.HIGHER SECONDARY SCHOO ..

Email ID

Phone Number

Password

Confirm Password

☐ I Agree to the terms and condition

Sign Up

Filling in Teacher Details

When registering as a teacher, you will need to provide the following information accurately:

1. **Name:**
Enter your full name as it appears in official school records.
 2. **Gender:**
Select your gender from the available options:
 - Male
 - Female
 - Other
 3. **School Name:**
From the dropdown list of suggestions choose your school from the list to ensure you are linked to the correct institution.
 4. **Email Address:**
Enter a valid email address. This will be used for sending important notifications and account verification. Ensure it is an active email address that you regularly check.
 5. **Phone Number:**
Enter your phone number. This will be used for further communication and, if necessary, for account recovery.
-

Setting Your Password

1. **Password:**
Create a strong password to protect your account. Your password should meet the following criteria:
 - At least 8 characters long.
 - A combination of uppercase letters, lowercase letters, numbers, and special characters.
 2. **Confirm Password:**
Re-enter the password to confirm. Both fields must match exactly to continue.
-

Accepting Terms and Conditions

To complete your registration, you must agree to the terms and conditions:

1. Scroll down and locate the Terms and Conditions checkbox.
2. Optionally, click on the Terms and Conditions link to read them.
3. Tick the checkbox labelled "I agree to the Terms and Conditions".

Once all these fields are filled in accurately, you can proceed by tapping the Sign Up button to submit your registration request.

Authority Registration Guide

The image displays two mobile application screens for the Authority Registration process.

Left Screen (Sign Up): The header is "Sign Up". Below it, the text "Get Started" is followed by "by creating a free account as". There are four buttons: "Student", "Teacher", "Authority" (highlighted in blue), and "Submit".

Right Screen (Authority SignUp): The header is "Authority SignUp". Below it, the text "Get Started" is followed by a series of input fields: "Name", "Select Gender", "Designation", "Puducherry Region", "Email ID", "Phone Number", "Password", and "Confirm Password". Below these fields is a checkbox labeled "I Agree to the terms and condition". At the bottom is a blue "Sign Up" button.

Filling in Authority Details

When registering as an authority, you will need to fill in the following details accurately:

1. **Name:**
Enter your full name as it appears in official records.
2. **Gender:**
Select your gender from the available options:
 - Male

- Female
 - Other
 - 3. **Designation:**
Select your official designation (e.g., Officer, Head, etc.) from the dropdown list provided.
 - 4. **Zone:**
Select your assigned zone from the dropdown list. Ensure the zone corresponds with your area of responsibility.
 - 5. **Email Address:**
Enter your official email address. This email will be used for important communication and account verification, so it should be one you have regular access to.
 - 6. **Phone Number:**
Enter your phone number. This contact information is necessary for communication and account recovery if needed.
-

Setting Your Password

1. **Password:**
Create a strong password to secure your account. The password should follow these guidelines:
 - A minimum of 8 characters.
 - Must include a mix of uppercase letters, lowercase letters, numbers, and symbols.
 2. **Confirm Password:**
Re-enter the password you just created to confirm. Both fields must match exactly.
-

Accepting Terms and Conditions

Before completing your registration, you must agree to the terms and conditions:

1. Scroll down and locate the Terms and Conditions checkbox.
 2. Optionally, click the Terms and Conditions link to read them.
 3. Tick the checkbox labelled "I agree to the Terms and Conditions".
-

Once all these fields are filled in accurately, you can proceed by tapping the **Sign Up** button to submit your registration request.